



# Have you seen this skink?



The plague or rainbow skink has recently been reported in both Havelock and on the outskirts of Blenheim- this pest skink was previously not present in the South Island.

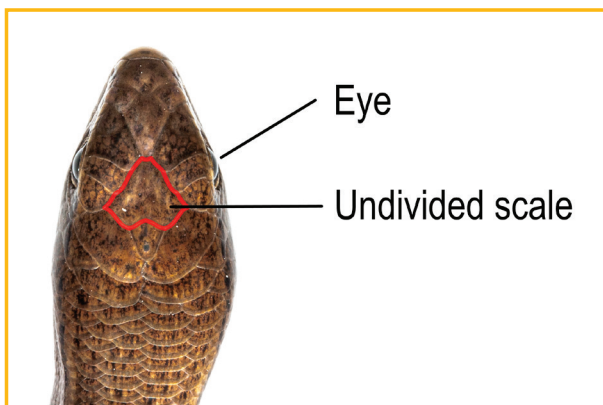
The Ministry for Primary Industries, in conjunction with the Department of Conservation and the Marlborough District Council are working collaboratively, to prevent the plague skink from establishing in the South Island.

The plague skink is a similar size to the common native skink (3½ – 5½ cm from nose to base of tail), but can be distinguished by a single large scale on the top of its head (in native skinks, the scale is divided in two). Most plague skink have a rainbow sheen to their scales when viewed in strong light.

**IF YOU THINK YOU HAVE SEEN A PLAGUE SKINK  
PLEASE TRY AND CATCH AND PHOTOGRAPH IT,  
KEEP IT ALIVE, AND CONTACT MPI IMMEDIATELY  
ON 0800 80 99 66.**



Scan QR for DOC  
fact sheet.



Close up showing single scale on head.

