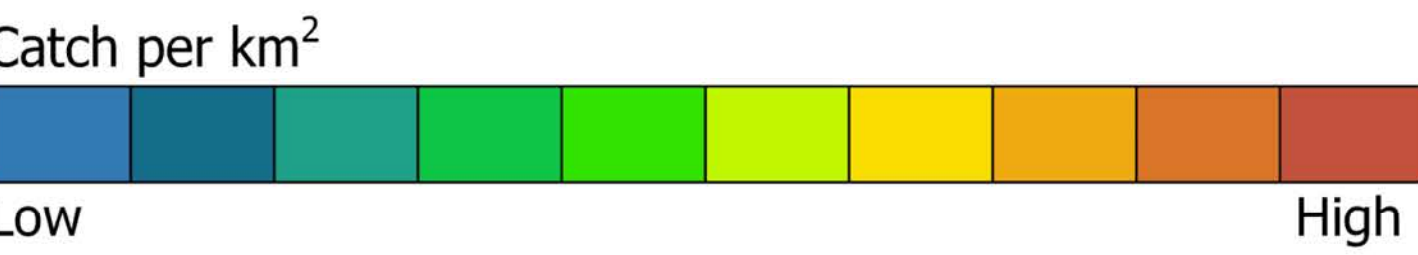


New Zealand Commercial Fishing Intensity

All Fishing Methods  
October 2007 - September 2017

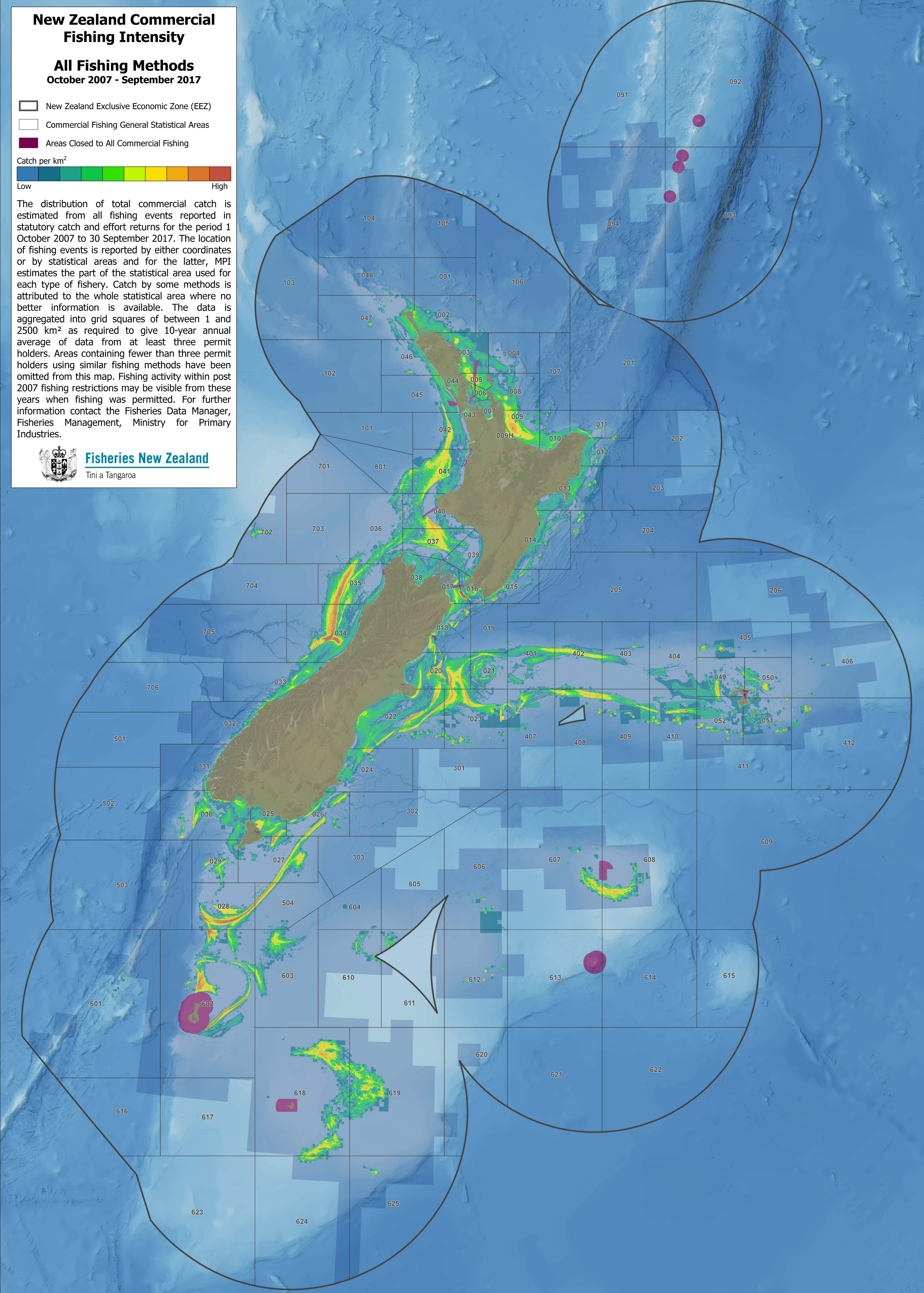
- New Zealand Exclusive Economic Zone (EEZ)
- Commercial Fishing General Statistical Areas
- Areas Closed to All Commercial Fishing



The distribution of total commercial catch is estimated from all fishing events reported in statutory catch and effort returns for the period 1 October 2007 to 30 September 2017. The location of fishing events is reported by either coordinates or by statistical areas and for the latter, MPI estimates the part of the statistical area used for each type of fishery. Catch by some methods is attributed to the whole statistical area where no better information is available. The data is aggregated into grid squares of between 1 and 2500 km<sup>2</sup> as required to give 10-year annual average of data from at least three permit holders. Areas containing fewer than three permit holders using similar fishing methods have been omitted from this map. Fishing activity within post 2007 fishing restrictions may be visible from these years when fishing was permitted. For further information contact the Fisheries Data Manager, Fisheries Management, Ministry for Primary Industries.



Fisheries New Zealand  
Tini a Tangaroa



Disclaimer: This map and all information accompanying it (the "Map") is intended to be used as a guide only, in conjunction with other data sources and methods, and should only be used for the purpose for which it was developed. The information shown in this Map is based on a summary of data obtained from various sources. While all reasonable measures have been taken to ensure the accuracy of the Map, MPI: (a) gives no warranty or representation in relation to the accuracy, completeness, reliability or fitness for purpose of the Map; and (b) accepts no liability whatsoever in relation to any loss, damage or other costs relating to any person's use of the Map, including but not limited to any compilations, derivative works or modifications of the Map. Crown copyright ©. This map is subject to Crown copyright administered by Ministry for Primary Industries (MPI). Data Sources: Hypsometric Relief supplied by Geographx, All Rights Reserved, © GeographX 2008; Coastline data sourced from LINZ under CC-BY 4.0. Marine Reserve data sourced from DOC; Bathymetric data sourced from NIWA licensed under the NIWA Open Data Licence v1.0.